

Technical Catalogue



Transforming | Measuring | Technology
www.newtekelectricals.com

Introduction

Brief History:

The Company was originally started as Wintek Electricals Pvt. Ltd. company as a Joint Venture with a German company in the year 2005. Thus the journey of Wintek Electricals Pvt Ltd began with a blend of technical expertise from Germany and India. With technical collaboration between the two, innovations were introduced which speak for themselves even today. With increasing demand for quality Transformers in the Indian Market, it was the need of the hour to cater to the needs of Indian market which had a large potential which was increasing twofold every month. Accordingly the bold step had to be taken and finally a completely independent company "Newtek Electricals" was formed in the year 2007 with the sole intention of introducing International Standard CTs in the Indian Market.

About Us:

We Newtek Electricals introduce ourselves as manufacturer of Instrument Transformers (CTs, PTs, COTR, MV etc.), Digital Meters (VAF, MFM, kWh, Ammeter & Voltmeter And Demand controller). Newtek Electricals is an ISO 9001:2015 certified. We are the first one to introduce Nylon Flame Retardant Casing Current Transformers(CTs)

Our product is been used in many prestigious projects in India as well as in other countries. The company has established its reputation within a short period as an innovative leader and quality manufacture by continuously upgrading technology, modernizing and manufacturing facilities and maintaining highest standards of quality and services.

Our Quality Concept:

We are dedicated towards upgrading the quality of Instrument transformers and digital meters. We share your high demands on quality, technical proficiency and services. These demands are an integral part of our company and serves as a constant reminder of tasks that we have taken as our responsibility. Every time we complete a job, we have improved our quality and that is what we are constantly striving to do.

All transformers are thoroughly tested during manufacturing process for any defects so that we can give guarantee to you to receive a quality product. Apart from all these our CTs and Meters are approved by CPRI (Central Power Research Institute, Bhopal) and ERDA (Electrical Research Development Association, Vadodara), respectively.

Domestic Customers



Overseas Customers



End Customers



Consultants

MECON Limited.	RSP Design Consultants India	Semac Consulting Engineers
AECOM (previously Spectral Services Consultants Pvt. Ltd.)	Synergy Infra Consultants Pvt. Ltd.,	Abhiyanta Electricals and Engineers Consultants
Entask Consultancy Services	J P Mukherji & Associates	Mott MacDonald
Tata Consulting Engineers	Excel Design Engineers	S. N. Joshi Consultants
C.R. Narayan Rao Consultants	Unique Consultant Services	ESKAYEM Consultants
Powertec Engineering	Kausi Consultancy Services	S. R. Associates
Avant-Garde Engineers & Consultants	Spectrum Pharmatech	Knexir Consultants Pvt. Ltd.
Satyavani Consultants	Currie Brown	Mott MacDonald
Karmaa SR Consultants Pvt. Ltd.	Unik Engineering Services	STUP Consultants Pvt. Ltd
Design Bureau	Arnita Consultants Pvt. Ltd.	Chettiar Consulting Engineers
IBI	Aevitas Pharmagro	IPS Mehtalia
Arup Consultant	Ralys Consulting Engineers	Vidyut sallagar Pvt Ltd
Lead Consultants	SYSN Consultants	CAMES
Fichtner India	Adarsha Developers	Ajit Kulkarni Consultant
Power Drive Engineers	Raj Electrical Designs	SAN Consultants
Archivista Engineering Projects Pvt. Ltd. (AEPPL)	S.M. Engineers & Consultants	Sripeksha Engineering Consultancy Services Pvt. Ltd.
Aami Associate Consulting Engineers	Convenient Construction & Consultancy Pvt. Ltd.	

Projects

Steel Project

1. BSPL, Bhilai
2. JSW Steel, (Bellary, Dolvi)
3. JSPL, Tamnar
4. BSRM ,Bangladesh
5. Sohar Steel, Oman
6. Electrosteel Steels Ltd, Bokaro
7. SLR Metalliks, Hospet
8. Kalyani Garuda, Raichur
9. Durgapur Steel Plant
10. Vedanta still

Industrial

1. Asian Paints, Ankaleshwar
2. DMIC, Aurangabad
3. INA Bearings India Pvt Ltd, Pune
4. Polycab Cables, Vadodara
5. Diamond Cables, Vadodara
6. Cosmo Films, Vadodara
7. Perkins India Pvt. Ltd., Aurangabad
8. Endurance Technologies Ltd.
9. LG Electronics, Ho Chi Minh
10. Daikin, Ho Chi Minh

Sugar

1. Enpro Sugars, Rohtak
2. Daund Sugars, Rohtak
3. Renuka Sugars, Brazil
4. Mumias Sugar, Kenya
5. Shiraguppe Sugar,Rohtak
6. Mylar Sugars, Bangalore
7. White Nile Mill House, Sudan
8. Rohtak & Enpro Sugars,Rohtak
9. Lokmangal Mauli India Ltd, Osmanabad
10. Chamundeshwari Sugars, Hassan

Power Segment

1. Adani, Baroda
2. JSPL, Tamnar
3. BARC, Tarapur
4. Banjrang power, Raipur
5. LVDCO_Micro Grid, Vadodara
6. Adani Power, Andhra Pradesh
7. TATA Power, Mumbai
8. Duragapur Steel Thermal Power Station, Durgapur

IT

1. Mahindra Satyam
2. Cyber City, Hyderabad
3. Cybermotion, Hyderabad
4. TCS Yantra Park, Mumbai
5. Wipro Data Center, Hyderabad
6. Trinity Software Solution,Hyderabad
7. HCL, Madurai
8. Shell IT Centre, Bangalore
9. Intel, Ho Chi Minh

Pharmaceuticals

1. Mylan Ltd, Hosur
2. Emami Limited, Mumbai
3. Almelo Chemicals, Hyderabad
4. MSN Laboratories, Hyderabad
5. GlaxoSmithKline, Chandigarh
6. Ranbaxy, Chandigarh
7. Sun Pharma, Vadodara
8. Macleods Pharma, Daman
9. Lupin, Indore

Petroleum

1. HPCL, Sugauli
2. Indian Oil Tank, Bhogat
3. IOCL, Ennore, Chennai
4. IOCL, Trisundi
5. BPCL, Mumbai
6. JBF Petrochemicals Ltd, Mangalore
7. TEXOL IOCL - Anaka Schalttafel, Faridabad

Textile

1. Welspun India Ltd
2. Bhilosa, Silvasa
3. Mathura Inds, Valsad
4. Creative Textile, Balitha
5. Santham Textile, Silvasa
6. Subam Textiles, Coimbatore
7. Vardhman Textiles, Ludhiana
8. Kirloskar Toyota Textile Machinery

Automobile

1. ARAI, Pune
2. ESSAR, Mumbai
3. VHCL, Umbergaon
4. Mahindra Vehicle, Chakan
5. Woco Motherson, Gandhidham
6. VE Commercial Vehicles, Pithampur
7. Honda Motorcyle & Scooters India, Narsapura

Chemical

1. Safe Water Chemicals,Kuwait
2. Kalpataru Organics, Sarigam
3. Virchows Lab,Hyderabad
4. Hikal Ltd, Hyderabad
5. Amoli Organics, Vapi

Cement Project

1. ACC Cement, Vizag
2. Century Cement, Raipur
3. Birla Cement, Chittorgarh
4. Aditya Cement, Chittorgarh
5. Sagar Cement, Hyderabad

Hotel

1. Silver Tower
2. Hotel Grand Haytt, Goa
3. Le Meridien, Coimbatore
4. Hotel Lotus Midtown, Mumbai
5. AIIMS, Delhi

Metro

1. Chennai Metro Rail Ltd, Chennai
2. Bengaluru Metro Rail Ltd, Bengaluru
3. Hyderabad Metro Rail Ltd, Hyderabad
4. Kochi Metro Rail Ltd, Kochi
5. Nevi Mumbai Metro, Mumbai
6. Nagpur Metro, Nagpur

Malls

1. Patna Malls, Patna
2. Footpark Mall, Indore
3. Lotus Mall, Bangalore
4. Magarpatta Mall, Pune
5. Shoppers Stop, (Mumbai, Bhopal)
6. Best Price, Aurangabad

Shipyard

1. Cochin Shipyard, Cochin
2. Bharti Shipyard, Mumbai
3. Hindustan Shipyard, Vizag
4. ABG Shipyard, Cochin
5. Goa Shipyard, Vosco Da Gama

Government

1. MTRDC, Bhopal
2. PWD, Bhopal
3. BHEL Site Office, Ranchi

Electricity Board

1. TNEB Cogen, Chennai
2. CSPDCL
3. MPMKVVCL, Bhopal & Gwalior

Educational

1. Rajiv Gandhi College, Chandigarh
2. Karpagam Medical College, Coimbatore

Beverages

1. Coca Cola, Varanasi
2. Carlsberg, Aurangabad

Polyester

1. Garware Polyesters Ltd, Aurangabad
2. Wellknown Polyesters Ltd, Daman

Pulp & Paper Mill

1. PT Pindo, Indonesia
2. Subam Papers

Infrastructure

1. Cinapolis, Patna
2. Magarpatta City, Pune
3. Bagmane Garnet, Bangalore
4. Mantri Developers, Bangalore
5. Arshiya International Ltd,
6. Mumbai Int Airport, Mumbai
7. Sungard Solutions Pvt Ltd, Mumbai
8. K. Raheja Corp.
9. Lodha Group, Mumbai
10. Runwal Bliss, Mumbai
11. Synergy Infra consultants-new building, Hyderabad

Telecom

1. Reliance JIO, Mumbai
2. Reliance Communication, Mumbai
3. Reliance 4G, Mumbai
4. Tata Communication, Bangalore

Submarine Project

1. VALE Project, Brazil

Banking

1. ICICI Bank, Chandivali
2. Bank of India, Mumbai
3. Deutsche Bank, Mumbai
4. SBI Data Center, Hyderabad

Energy

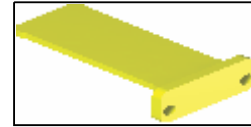
1. Alstom, Vadodara
2. Bharat Bijli, Airoli
3. Cummins, Pune
4. Kirloskar, Saswad
5. Haldia Energy ltd

TRANSFORMERS

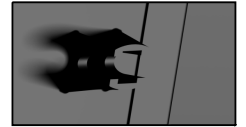
INTRODUCING SPLIT CORE CURRENT TRANSFORMERS



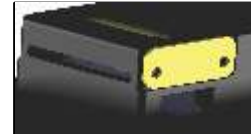
- **Applicable to International standard :**
IEC 61869-2, IS 2705/1992.
- **Current ratios** : 100 to 5000A
Accuracy class : 0.5, 1 & 3
- **Features:**
Wide range of system current rating.
- **Various Mounting Options:** like
Bus Bar Mounting(b),
Base Mounting(d),
Protective Terminal Cover (a).
Terminal with self lifting screw with dual connection
facility giving access from both sides of transformers(c).



TERMINAL COVER(a)



BUSBAR MOUNTING(b)



BOTH SIDE ACCESS(c)



BASE MOUNTING(d)

NYLON CASING & RESIN CAST CURRENT TRANSFORMERS



- **Accuracy Class:** 1.0, 0.5, 0.2, 0.5s, 0.2s for Metering & 5P10, 5P15, 5P20, 10P10, PX for Protection.
- **VA Burden:** 1VA to 30VA available as per IS 2705/1992, IEC 61869-2
- **Range:** 1A to 6300A available.
- **Resin Cast Current Transformer Type:** BPL and WPL
We can manufacture Resin Cast Current Transformer as per customer requirement

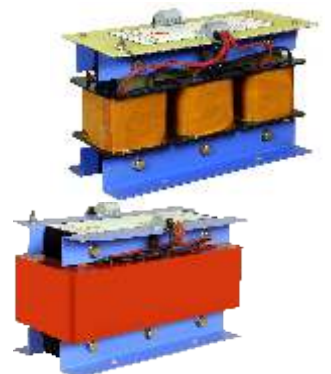


LV CONTROL & POTENTIAL TRANSFORMERS



Newtek provides tailor made range of LT Control and Potential Transformer As per customer demand both in single phase and three phase system, in Resin Cast/Tape Insulated/Varnish Impregnated type of Insulation.

- **For Control Transformer Voltage Range:** 0 to 690V, max VA 45kVA.
- **Available Class of PTs:** 0.2, 0.5, 1.0, 3P, 6P as per IS 12021/1987 for Control Transformer, 3156/1992 for Potential Transformers.
- We can provide **IVTs, RVTs** on demand.
- We can supply dual secondary PT and tap changer type control Transformers.



MV CURRENT & POTENTIAL TRANSFORMERS



Indoor Type Resin Cast CT's

- **Nominal System Voltage:** 6.6 to 33KV
- **Type:** WPL and BPL
- **STC Rating:**
3KA to 44KA for 0.5 sec to 3 sec
- **Number of Secondary:** Single, Dual, Triple
- **Accuracy Class:** 0.2, 0.2s, 0.5, 0.5s, 1.0, 5P10, 5P20, 10P10, PS as per IS 2705/1992

Indoor Type Resin Cast PT's

- **Nominal System Voltage:**
6.6 to 33KV
- **Number of Secondary:**
Single, Dual
- **Accuracy Class:** 0.2, 0.5, 1.0, 3P, 6P as per IS 3156/1992



Meters

MFM METERS



VAF METERS



ENERGY METERS

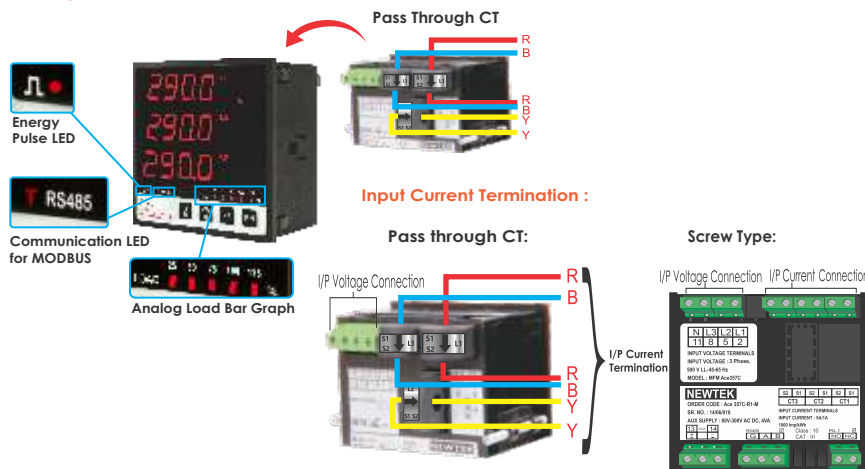


AMMETER & VOLTMETERS



Unique Features

Unique Features of Ace series :



ACE 357CR4

Newtek introduces MFM meter with kVAh lead, kVAh lag & avg PF over a period of time, as per new utility formula

Features:

- kVAh lag and kVAh lead available as per new utility formula.
- Average PF over period of time as per new utility formula.
- Instantaneous and avg PF are available with more accuracy i.e. three digit after decimal.
- User can set target PF as per their requirement
- Meter will display required capacitance in kVAR to achieve target PF.



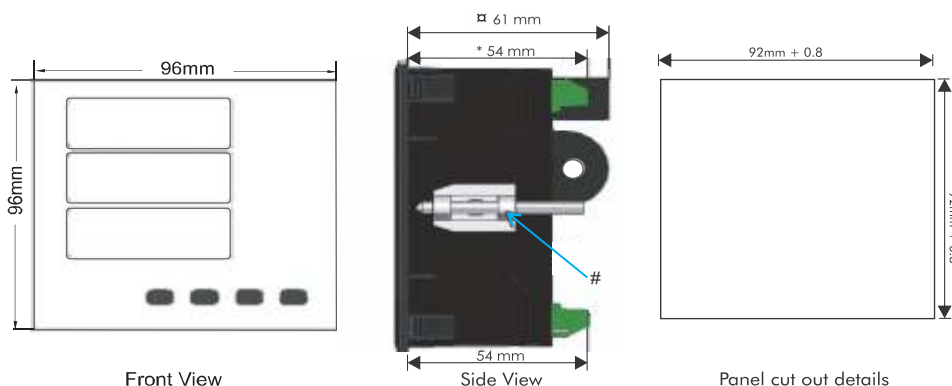
Standard Features :

- 96mm x 96mm DIN Quadratic
- 3 Line 4 Digit LED display
- On Sight Programmable
- True RMS Measurement

Optional Features

- 1) MODBUS
- 2) 1 Relay Programmable as limit switch.

Mounting of Meter



Front View

Side View

Panel cut out details

- # Clamping bracket assembly (2x) for secure fixing of the meter on panel.
- * Depth of screw type connector meter with optional features
- Depth of pass through CTs type meter with optional features.

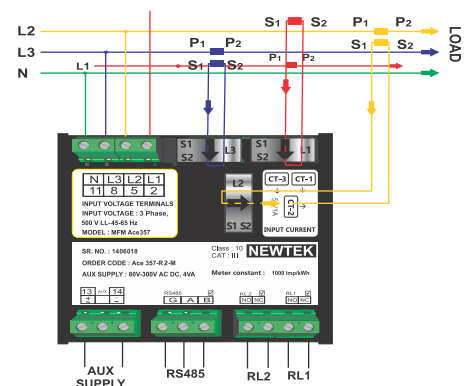
Standards

Accuracy Class: 1.0/0.5

Applicable Standards: Safety Standards-IEC 61010, IP Standards For Water & Dust-IEC 60529, EMI/EMC-IEC 61326

Enclosure: Material-Polycarbonate(UL94V0), Front-IP54, Back-IP20

Wiring Diagram



3 Phase 4 Wire

- 3 Phase 4 Wire :** Connection of neutral (N) required
- 3 Phase 3 Wire :** Connection of Neutral (N) not required
- 1 Phase 2 Wire :** Connection of L2, L3 not required

Connection of CT2, CT3 not required

newtek
electricals

M-90 M.I.D.C. Waluj, Aurangabad – 431136 Maharashtra, India. Tel/Fax : +91-0240 2551555 Mobile : 9372862651, 9372862647

Email : sales@newtekelectricals.com, mkt.east@newtekelectricals.com, mkt.west@newtekelectricals.com, mkt.south@newtekelectricals.com
mkt.north@newtekelectricals.com Website : www.newtekelectricals.com